

# NEUROLOGICAL DISEASE MODELING

In Nijmegen  
The Netherlands



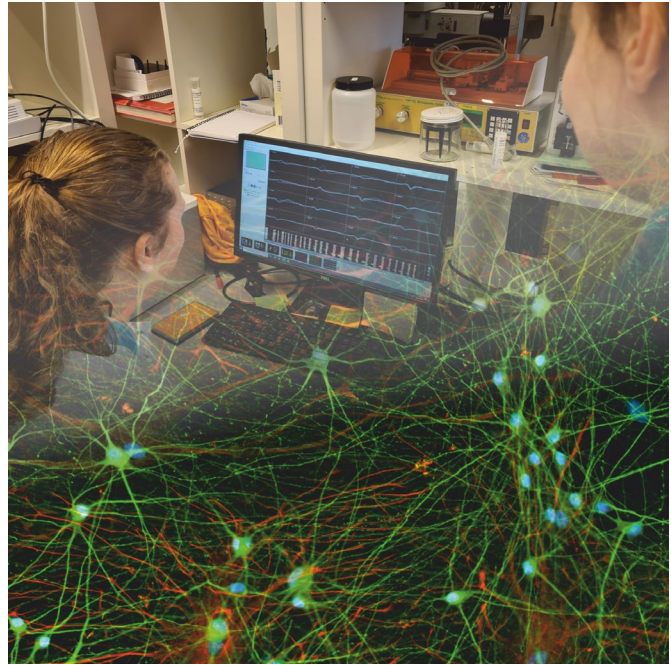
## The secrets of generating and assessing human neuronal network cultures on the chip

Learn how to use human stem cell derived neuronal network cultures, multi electrodes arrays (MEAs) and multi-omics to answer your questions on mechanisms underlying neurological disorders.

### Special focus on epilepsy

### External expert speakers:

- Prof Dr Juan Burrone, King's College London, UK
- Dr. Angelo Accardo – TU Delft, Belgium
- Dr. Michela Chiappalone, Genova, Italy



**FENS** | Federation of  
European  
Neuroscience  
Societies

**IBR**  
PERC

## FENS/IBRO-PERC stipends available!!

**Deadline March 5, 2025!!**

- Free course admission + 750 EUR travel support
- For students in the EU (outside the Netherlands)

For stipends apply here: <https://loom.ly/yJqQ0rY>

### General registration:

More info and general registration here:

[https://lnkd.in/gQ\\_zXCWH](https://lnkd.in/gQ_zXCWH)

Early bird registration: March 28, 2025